

THE BRONX

J. HOOD WRIGHT PARK,
MANHATTAN

ST. MARY'S PARK,
THE BRONX

FREE SHAKESPEARE IN THE PARKS

MANHATTAN

QUEENS

NYPL & BRYANT
PARK, MANHATTAN

CATHEDRAL OF ST. JOHN
THE DIVINE, MANHATTAN

A.P.R.O.W. FIELD
HOUSE, QUEENS

THE PUBLIC THEATER PRESENTS
MOBILE UNIT:

THE COMEDY OF ERRORS

SUNSET PARK,
BROOKLYN

BROOKLYN

ASTOR PLACE,
MANHATTAN

MARIA HERNANDEZ
PARK, BROOKLYN

PROSPECT PARK,
BROOKLYN

BOY WILKINS PARK,
QUEENS

STATEN ISLAND

THE PUBLIC.

HUDSON YARDS,
MANHATTAN

WOLFE'S POND PARK,
STATEN ISLAND

TRAYVES PARK,
QUEENS

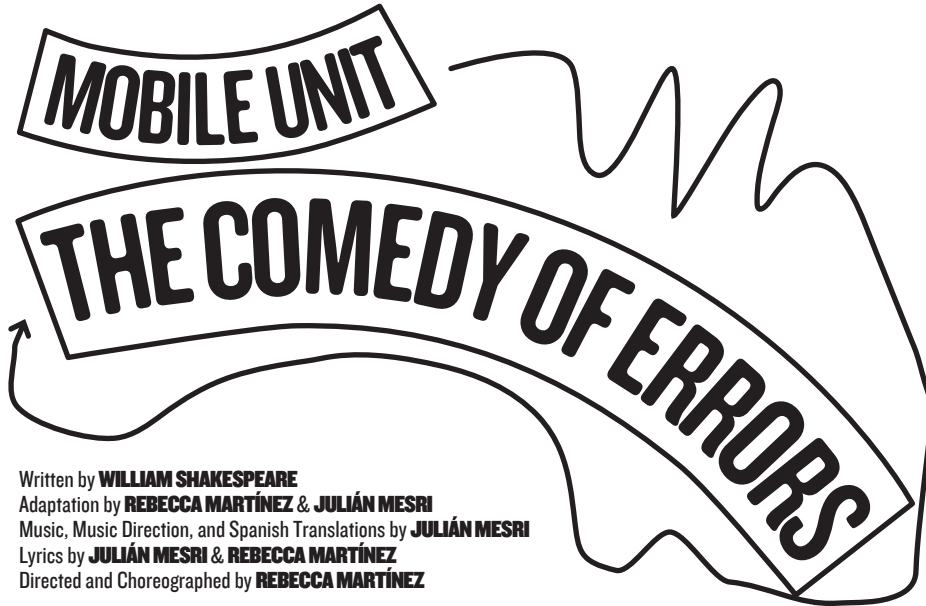


THE PUBLIC THEATER

OSKAR EUSTIS
ARTISTIC DIRECTOR

PATRICK WILLINGHAM
EXECUTIVE DIRECTOR

Presents



Written by **WILLIAM SHAKESPEARE**
Adaptation by **REBECCA MARTÍNEZ & JULIÁN MESRI**
Music, Music Direction, and Spanish Translations by **JULIÁN MESRI**
Lyrics by **JULIÁN MESRI & REBECCA MARTÍNEZ**
Directed and Choreographed by **REBECCA MARTÍNEZ**

With **JOÉL ACOSTA, VARÍN AYALA, MICHAEL CASTILLEJOS, DANAYA ESPERANZA, REBECCA JIMENEZ, KEREN LUGO, ALAN MENDEZ, SARA ORNELAS, GÍAN PÉREZ, DESIRÉE RODRIGUEZ, GLENDALIRIS TORRES-GREAUX**

Scenic Design **EMMIE FINCKEL**
Costume Design **LUX HAAC**
Sound Design **CHARLES COES & TYE HUNT FITZGERALD**
Prop Manager **CLAIRE M. KAVANAH**
Fight Director **SEAN FLETCHER GRIFFIN**
Music Director **JACINTA CLUSELLAS**
Voice and Text Coach **JULIE CONGRESS**
Production Dramaturg **AMRITA RAMANAN**
Casting **HEIDI GRIFFITHS/KATE MURRAY**
Production Stage Manager **LUISA SÁNCHEZ COLÓN**
Line Producer **CITLALI PIZARRO**
Company Manager **HEATHER FICHTHORN**
Production Manager **JESSICA NEKRITZ & ALIYAH SALL**
Director of Mobile Unit **PRAYCIOUS WILSON-GAY**
Artistic Programs Coordinator **JOSÉ HUGO HURTADO**

Associate Artistic Director /
Resident Director
SAHEEM ALI

Associate Artistic Director /
Director of Artistic Programs
FREEDOME BRADLEY-BALLENTINE

Directors of Casting
**HEIDI GRIFFITHS,
JORDAN THALER**

Director of Producing &
Artistic Planning
CHIARA KLEIN

General Manager
JEREMY ADAMS

Director of Production
PETER DEAN

OPEN SOCIETY FOUNDATIONS is the Lead Supporting Sponsor for GO PUBLIC! A FESTIVAL OF FREE SHAKESPEARE IN THE PARK. Leadership support for Mobile Unit is provided by the **ABRAMS FOUNDATION, THE ALPHADYNE FOUNDATION, BLOOMBERG PHILANTHROPIES,** and **THE TOW FOUNDATION.**

THE LUESTHER T. MERTZ LEGACY TRUST provides leadership support for The Public Theater's year-round activities.



Welcome to The Public Theater's Mobile Unit and our production of William Shakespeare's **THE COMEDY OF ERRORS**, adapted by Rebecca Martínez and Julián Mesri. **THE COMEDY OF ERRORS** is a modern reimagining of the classic trope of twins and mistaken identity that has captivated screens and stages for decades. This unique musical adaptation weaves a beautiful story of mistaken identity, family separation, and joyous reunion. Filled with hilarious jokes and heartwarming songs, you may find yourselves singing along, tapping your feet, dancing in your chair, and perhaps even shedding a tear. We are thrilled to bring a spectacular cast of players to connect with you and share this emotional journey, along with the production's contemporary vision brought to life by our design team.

This year's production has many new features that make it unlike any other Mobile Unit. As you can see, we have raised the stage to improve sightlines, and we've increased seating so more neighbors can see what makes the Mobile Unit unique. This year's iteration features new music, added musical instrumentation, and expanded sound and lighting design, making this the largest expression of Mobile Unit in the program's history, so you are in for a treat!

Built on Public Theater founder Joseph Papp's radical approach to artmaking, Mobile Unit deconstructs the barriers to access for New York City theatergoers. Papp believed that cultivating safe, bold spaces where ideas can be fostered and exchanged is essential; that theater is a shared transformational tool that can sculpt humanity. Our commitment to making art accessible is a core value of the Mobile Unit program. Great art is for everyone and not the privileged few, and it is a blessing to meet you all in parks and plazas.

Theater can transform when it speaks to the community that it serves, and **THE COMEDY OF ERRORS** meets New York City with intentional language and brilliantly uplifts an experience of our humanity. It feels right to end this note by acknowledging our deep gratitude for all the artists and collaborators who make this possible, including our crew, The Public Theater staff, the executive leadership of Oskar Eustis and Patrick Willingham, our Board, donors, and you, our neighbors and friends. It is everyone's commitment that empowers Mobile Unit's stories; together we are a community.

PRAYCIOUS WILSON-GAY
DIRECTOR OF THE MOBILE UNIT

FREEDOME BRADLEY-BALLENTINE
ASSOCIATE ARTISTIC DIRECTOR/
DIRECTOR OF ARTISTIC PROGRAMS

UNA NOTA

FROM PRAYCIOUS & FREEDOME

Hola y bienvenido a la Mobile Unit de Public Theater

y a nuestra producción de LA COMEDIA DE ERRORES (THE COMEDY OF ERRORS) de William Shakespeare, adaptada por Rebecca Martínez y Julián Mesri. La producción de este año tiene muchas características nuevas que la diferencian de cualquier otra Mobile Unit. Como puede ver, hemos elevado el escenario para mejorar las líneas de visión y hemos agregado asientos para que más vecinos puedan ver lo que hace Mobile Unit única. La versión del espectáculo de este año presenta música nueva, instrumentación musical agregada y paquetes ampliados de sonido e iluminación, lo que la hace la producción más sofisticada de nuestra historia, así que lo espera una gran sorpresa.

LA COMEDIA DE ERRORES (THE COMEDY OF ERRORS) es una reinención moderna del clásico tropo

de los gemelos que ha cautivado pantallas y escenarios durante décadas. Esta adaptación musical única, llevada a la vida por el destacado equipo de Rebecca Martínez y Julián Mesri, teje una hermosa historia de identidad equivocada, separación familiar y reencuentro feliz. Su adaptación moderna está llena de chistes divertidos y canciones conmovedoras que lo harán cantar, dar golpecitos con los pies, bailar en su butaca y quizás incluso derramar una lágrima. Estamos encantados de traer un elenco espectacular de actores para conectarse con usted y compartir este recorrido emocional. LA COMEDIA DE ERRORES (THE COMEDY OF ERRORS) se representa en una visión contemporánea que cobra vida gracias a la excelencia artística del equipo de diseño.

En esencia, Mobile Unit deconstruye las barreras de acceso al teatro para los asistentes de la Ciudad de

Nueva York y se basa en la estrategia radical de Joe Papp de abordar la creación artística. Él creía que es esencial cultivar espacios seguros y audaces donde se puedan fomentar e intercambiar ideas. Ese teatro es una herramienta de transformación compartida que puede esculpir a la humanidad. Nuestro compromiso de hacer que el arte sea accesible es el valor central del programa de Mobile Unit. El gran arte es para todos y no para unos pocos privilegiados, y es una bendición tener la posibilidad de encontrarlos a todos en parques y plazas dando un bien público que es vital para una sociedad democrática.

El teatro puede transformarse cuando habla a la

comunidad a la que sirve, y LA COMEDIA DE ERRORES (THE COMEDY OF ERRORS) se reúne con la Ciudad de Nueva York con un lenguaje intencional y eleva brillantemente una experiencia de nuestra humanidad. Me parece apropiado finalizar esta nota reconociendo nuestro profundo agradecimiento a todos los artistas y colaboradores que hacen esto posible, incluyendo a nuestro equipo, el personal de The Public Theater, el liderazgo ejecutivo de Oskar Eustis y Patrick Willingham, nuestra junta directiva, los donantes y ustedes, nuestros vecinos y amigos; es el compromiso de todos juntos lo que potencia las historias de Mobile Unit; somos una comunidad.

PRAYCIOUS WILSON-GAY
DIRECTOR OF THE MOBILE UNIT

FREEDOME BRADLEY-BALLENTINE
ASSOCIATE ARTISTIC DIRECTOR/
DIRECTOR OF ARTISTIC PROGRAMS

BIOS

THE PUBLIC THEATER continues the work of its visionary founder Joe Papp as a civic institution engaging, both on-stage and off, with some of the most important ideas and social issues of today. Conceived over 60 years ago as one of the nation's first nonprofit theaters, The Public has long operated on the principles that theater is an essential cultural force and that art and culture belong to everyone. Under the leadership of Artistic Director Oskar Eustis and Executive Director Patrick Willingham, The Public's wide breadth of programming includes an annual season of new work at its landmark home at Astor Place, Free Shakespeare in the Park at The Delacorte Theater in Central Park, the Mobile Unit touring throughout New York City's five boroughs, Public Works, Public Shakespeare Initiative, and Joe's Pub. Since premiering *HAIR* in 1967, The Public continues to create the canon of American Theater and is currently represented on Broadway by the Tony Award-winning musical *Hamilton* by Lin-Manuel Miranda, *Suffs* by Shaina Taub, and *Hell's Kitchen* by Alicia Keys and Kristoffer Diaz. Their programs and productions can also be seen regionally across the country and around the world. The Public has received 60 Tony Awards, 194 Obie Awards, 57 Drama Desk Awards, 63 Lortel Awards, 40 Outer Critics Circle Awards, 13 New York Drama Critics' Circle Awards, 65 AUDELCO Awards, 6 Anthony Awards, and 6 Pulitzer Prizes. publictheater.org

JOÉL ACOSTA (*Antipholus*). Public debut. Off-Broadway: *Gatsby Immersive* (Jay Gatsby), *Aloha Boricua!*, *Route 66*, *Richard II* (Shakespeare's Globe), *Henry IV Parts 1+2*. TV: "TFTBA," "FBI: Most Wanted." Education: BFA Acting, Mason Gross School of The Arts. Many thanks to Katie & Violet at PMA, and Abby at Bohemia. Endless love to his family: Paqui, Ariana, Judell, Frank, and his incredibly resilient Mother, Amarily. [@joelacostagram](https://www.instagram.com/joelacostagram) #patriayvida

VARÍN AYALA (*he/him* (*Egeon/Pinch*)). The Public: *The Comedy of Errors*. Selected credits: Off-Broadway: *The Merchant of Venice*, *The Taming of the Shrew* (TFANA); *La Canción* (Repertorio Español). Regional: *The Merchant of Venice* (STC); *The Motherfucker with the Hat* (TheaterWorks); *Ropes, Pinkolandia* (Two River Theater); TV: "Younger," "Lie to Me." Training: The Actors Center Conservatory, The Public's The Shakespeare Lab, Groundlings. Para mami y especialmente para papi; sé que estás conmigo. Instagram: [@therealvarinayala](https://www.instagram.com/therealvarinayala)

MICHAEL CASTILLEJOS (*Solina/2nd Merchant/Guitar*) is an actor, musician, and on-camera host who has collaborated with artists across a variety of media. Broadway: *Take Me Out*. NYC/Regional: *Artificial Flavors* (The Civilians), *La MaMa Cantata* (La MaMa ETC), *Gentlemen Volunteers* (Pig Iron), *Son of a Gun* (Theatre Row), *SMILE* (Arclight), *Dust Can't Kill Me* (NYMF/NYMF

Award), *Careless Love* (ART). TV: "FBI: Most Wanted," "Be-Loved," "On Broadway," "American Masters," "Law & Order: Organized Crime," "New Amsterdam," "Bull," "Ghost," "Orange Is the New Black," "Crashing."

DANAYA ESPERANZA (*Adriana*). Off-Broadway: *for colored girls...*, *The Tempest*, *Twelfth Night* (The Public); *O.K!* (WP Theater); *Buena Vista Social Club* (Atlantic); *Misanthrope* (Molière in the Park); *Merchant of Venice* (TFANA/STC); *Bayano* (NBT); *Play On! Shakespeare* (CSC/OSF); *Breitwisch Farm* (Esperance); *Mary Jane*, *Othello* (NYTW); *Men on Boats* (Playwrights Horizons/Clubbed Thumb); *Washeteria* (Soho Rep); *Our Lady of Kibeho* (Signature). Regional: *The Bleeding Class* (Chautauqua); *Midsummer* (Folger); *Alma* (DCPA); *Annie Salem* (NYSAF); *Romeo and Juliet* (STC); *Protect the Beautiful Place* (McCarter); *Another Word for Beauty* (Goodman). TV: "The Blacklist," "Elementary." Training: Juilliard.

REBECCA JIMENEZ (*Understudy Adriana, Luciana, Emilia/Courtesan, Angelo*). Off-Broadway: *Our Dear Dead Drug Lord* (2nd Stage/WP). NY Theater: *Superstitions* (New Ohio), *The Sketchy Eastern European Show* (The Players Theatre). She has also developed work with New York Theatre Workshop, Roundabout Theater Company, Page73, Playwrights Horizons, Ojai, and others. In Fall 2023, she had her playwrighting debut with (and starred in) *Las Yumas* at The Players Theatre. BFA graduate from SUNY Purchase. For abuelo Omar and tia Mirta.

KEREN LUGO (*she/her* (*Luciana*)). The Public: *Privacy*, *Romeo y Julieta* (radio play). Off-Broadway: *Stargazers* (Page 73); *At the Wedding* (LCT3); *Actually, We're F*cked* (Cherry Lane); *Two Mile Hollow* (WP Theater). Regional: *Girls, Scenes From Court Life* (Yale Rep); *Water by The Spoonful* (Mark Taper Forum); *Men on Boats* (Baltimore Center Stage); *Women of Padilla* (Two River Theater); *Henry V, Our Town* (Chautauqua Theater Festival). TV: "New Amsterdam," "Orange is the New Black," "The Americans." Education: MFA NYU Graduate Acting.

ALAN MENDEZ (*Understudy Antipholus, Egeon/Pinch, Solina/2nd Merchant, Troubadour, Dromio*) is thrilled to return to The Public Theater and rejoin the Mobile Unit's *Comedy of Errors* team. Additional Public credits: *Socrates*. Regional credits: *It Happened in Key West* (Fulton Theatre), *Bandstand* (Playhouse on Park), *Bandstand* (Phoenix Theatre Company), *Natasha, Pierre, and the Great Comet of 1812* (Hangar Theatre), *Evita* (Fulton Theatre), and *Once* (Mason Street Warehouse). Mendez is a multi-instrumentalist, and bandleader/co-founder of the Shubert Alley Cats. Muhlenberg College (B.A., Theatre & B.S., Physics). [@alan.r.mendez](https://www.instagram.com/alan.r.mendez) [shubertalleycats](https://www.instagram.com/shubertalleycats)

SARA ORNELAS (*Troubadour/Guitar*) was born and raised in Texas and wears her Mexican roots proudly. As a child, she sang at every opportunity at church and usually played Satan. Favorite credits include: *Maria in West Side Story*, *Boli in American Mariachi*, and *Jose in*

Las Desaparecidas. She'd like to thank her corazón de melón for the apollo, and is so excited to be back on The Public stage again! IG: @Saravornelas

GIÁN PÉREZ *he/him (Dromio)* Off-Broadway: *Comedy of Errors* (The Public Theatre), *Sing Street* (NYTW). Regional: *Sing Street* (Huntington Theatre), *Next to Normal* (Westport Country Playhouse). TV: "East New York" (CBS). As a musician, Pérez has played at venues like The Stone, Joe's Pub, Downtown Music Gallery, among others. Mami, Papi, Nani, y Nina, los amo con todo mi ser. Zero gravity!

DESIREÉ RODRIGUEZ (*Emilia/ Courtesan*). Off-Broadway: *Titanique*, *Tricks the Devil Taught Me*. Regional: *Kiss My Aztec!* (Berkeley Rep/La Jolla Playhouse/Hartford Stage), *Barrio Grrrr!* (Kennedy Center). Film: *Testament*, *The Sun Is Also a Star*, *Black Nativity*. TV: "FBI," "New Amsterdam," "Unbreakable Kimmy Schmidt," "Orange is the New Black," "Madam Secretary," "The Village." Best roles to date: Wife to Josh and Mama to Mateo. @msdesrod

GLENALARIS TORRES-GREAUX *she/her (Angelo)* is excited to make her Public Theater debut! Born and raised in Puerto Rico and a Houston, Texas native. Credits: *On Your Feet!* National Tour (Ensemble/ Gloria Fajardo understudy), *On Your Feet!* Puerto Rico (Ensemble/Rebecca). Education Apprentice TUTS '23. BFA SHSU '23. Much love to her family, BLOC, and The Public Theater!

REBECCA MARTÍNEZ *she/her (Director, Choreographer, Adapter, Lyrics)* is a multidisciplinary director and the Cohort Collaborations Director for One Nation/One Project. Recent projects: *Bite Me* (WP Theater/Colt Coeur), *It Happened in Key West* (Fulton Theatre), *Sancocho* (WP Theater), *Living and Breathing* (Two River), *Los Complicados* (EST Marathon), *Randy's Dandy Coaster Castle* (Egg & Spoon Collective), *Songs About Trains* (Working Theater/Radical Evolution), *Somewhere Over the Border* (Syracuse Stage/Geva Theatre). Martínez has developed new work with The Public Theater, Amas Musical Theater, the O'Neill, Latinx Playwrights Circle, the Sol Project, NAMT, INTAR, Working Theater, The Playwrights Realm, among others. Affiliations: member of the Obie Award-winning Sol Project Collective, co-facilitator of the WP Directors Lab, 2021 TCG Rising Leaders of Color, Lincoln Center Theater Directors Lab, INTAR's Unit52, New Georges Affiliated Artist, Drama League Directing Fellow, member of SDC. Awards: Colorado Henry Award for Directing; four Portland, Oregon Drammy Awards; Lilla Jewel Award for Women Artists. Martínez is originally from Colorado with deep ancestral roots in the Southwest. rebeccamartinez.org

JULIÁN MESRI (*Music & Lyrics, Adapter, Music Director, Spanish Translations*) is a New York-based Argentinean-American playwright and composer who makes multilingual plays and musicals. He was recently named the Signature Theater Judith Champion

Musical Theater LaunchPad Resident. Recent work includes *Telo* (Live and In Color finalist, O'Neill NMTC finalist), *Bartolomé de las Casas Ruins My Pool* (O'Neill NPC Finalist), and music directing the upcoming *Canciones with Radical Evolution*. He is a Core Writer at the Playwrights Center and has been a member of The Public's Emerging Writers Group, a Dramatist Guild Fellow, an Emerging Artist of Color Fellow and Usual Suspect at NYTW, and a Van Lier fellow at Repertorio Español. His adaptation of Fuenteovejuna received the HOLA Outstanding production award. He has also translated dramatic works for the Lark US/Mexico Exchange and PEN World Voices.

EMMIE FINCKEL *they/them (Scenic Design)*. The Public: Debut. Broadway: *KPOP*, *Mary Jane* (Associate). Off-Broadway: *53% Of* (Second Stage), *In the Southern Breeze* (Rattlestick), *The Watering Hole* (Signature Theatre), *In the Penal Colony* (NYTW). Regional: *Becoming a Man* (A.R.T.); *The Hot Wing King* (Hartford Stage); *Problems Between Sisters* (Studio Theater); *As You Like It* (La Jolla Playhouse); *the ripple, the wave, that carried me home* (Yale Rep). Member: Woodshed Collective, Local USA 829. www.efinckel.com

LUX HAAC (*Costume Design*). The Public: *Manhatta*. Broadway: *The Thanksgiving Play*. Off-Broadway: *Between Two Knees*, *Number Our Days* (PAC NYC); *On That Day in Amsterdam* (Primary Stages); *53% Of* (Second Stage); *Songs About Trains* (New Ohio Theatre); *Eureka Day* (Colt Coeur). Regional: *For the People* (Guthrie Theater); *The Wizard of Oz* (Geva Theatre); *Espejos: Clean* (Hartford Stage, Syracuse Stage); *LEAR* (Cal Shakes); *I and You*, *Annapurna* (Syracuse Stage). MFA: NYU Tisch. @luxhaac luxhaac.com

CHARLES COES (*Sound Design*). New York: *Beautiful Lady* (La MaMa), *Golden Shield* (MTC), *Letters of Suresh* (Second Stage), *Small World Stories* (Phantom Limb), *Sing Street* (NYTW), *Natural Shocks* (WP). Tour: *Jitney*, *Into the Woods*, *Peter and the Starcatcher*. Regional: Huntington, Rep Theater of St Louis, Baltimore Center Stage, OSF, and others. Homer's Coat's production of *An Iliad* on six continents. As Associate Designer on Broadway: *Girl From the North Country*, *To Kill a Mockingbird*, *Junk*, *Peter and the Starcatcher*.

TYE HUNT FITZGERALD (*Sound Design*). Canadian sound designer based in NYC. The Public: *The Vagrant Trilogy* (designer); *Cullud Wattah*, *The Michaels*, *White Noise*, *Eve's Song* (associate). Design credits: *Superstitions*; *The Full Monty*; *The 25th Annual Putnam County Spelling Bee*; *Matilda the Musical*; *Wilder Shorts*. Associate/assistant credits: *Hell's Kitchen*, *Pictures from Home*, *A Soldier's Play* (Broadway); *Alice By Heart*. @tyehuntfitz.

CLAIRE M. KAVANAH (*Prop Manager*). The Public: *Jordans*, *The Ally*, *Hell's Kitchen*, *The Harder They Come*, *A Raisin in the Sun*, *Fat Ham*, *Mobile Unit: Shakespeare Call*

& *Response*, *Girl From the North Country*, *The Michaels*, *Mojada*, *Eve's Song*, *Miss You Like Hell*, *Fire in Dreamland*, *Illyria*, *Hamlet*, *Gently Down the Stream*, *Privacy*, *The Gabriels*, *Eclipsed*. Broadway prop artisan: *SpongeBob SquarePants*, *Hand to God*. Broadway production props supervisor: *Girl From the North Country*, *Fat Ham*.

SEAN FLETCHER GRIFFIN (*Fight Director*). Member of UncleDave's Fight-House. Broadway: *Uncle Vanya*, *The Great Society* (LCT); *Merrily We Roll Along*. NY: *Jordans*, *Midsummer Night's Dream* (Public); *Light in the Piazza*, *Oliver!* (Encores); *Good Enemy* (Minetta Lane); *NERO* (KPB); *Secret Life of Bees* (Atlantic); *Lockdown*, *The Siblings Play* (Rattlestick); *Leap and the Net Will Appear* (New Georges); *Manhood* (NBT). Regional: *View from the Bridge* (Long Wharf); *Living and Breathing* (Two River); *Wait Until Dark* (Dorset); *Billy Elliot*, *Oklahoma!* (Goodspeed). Member of AEA and playwright.

JACINTA CLUSELLAS (*Music Director/Guitar*) is a composer from Buenos Aires. Selected work: *AZUL the musical* (Jonathan Larson Grant, Goodspeed, NMTC at O'Neill Theatre Center, NAMT), *A Donde Llega el Silencio* (West One Music, Netflix), *AZUL EP* (New Music USA, NYC Women's Fund, Playbill Songwriter Series). Selected performances: *SIX* (Broadway), *Lin-Manuel Miranda's Coco* concert, SXSW, Lincoln Center. Teaching Artist at New York Philharmonic and at the American Composers Orchestra; former professor at Berklee. Upcoming: new musical commissioned by the Goodman. jacintaclusellasmusic.com

RAPHAEL TORN (*Percussion*) is a nice Jewish man-boy trying to make his momma proud. Credits as percussionist include Disney's *The Lion King*, *Cirque du Soleil's Kooza*, and various Broadway productions. Torn also composed original music and served as Musical Director for *Tropical Secrets* in Charlotte, NC.

LUISA SÁNCHEZ COLÓN *she/her (Production Stage Manager)*. The Public: *Hell's Kitchen*, *Comedy of Errors*, *The Vagrant Trilogy*, *cullud wattah*, *Mobile Unit's Summer of Joy*, *Romeo y Julieta*, *Shipwreck*, *The Line*, *UTR Festival*, *Mojada*, *White Noise*, *Miss You Like Hell*, *Oedipus El Rey*. Signature Theatre: *A Bright New Boise*. Manhattan Theatre Club: *Where the Mountain Meets the Sea*. Lincoln Center Theater: *The Nosebleed*, *Greater Clements*.

ARIANA MICHEL (*Stage Manager*) is a proud born and raised Angelino. She enjoys bouncing back and forth both coasts working on theater that broadens an audience's perspective, especially bilingual productions that help create space for more voices to be heard and understood. Michel is blessed to be surrounded with positive creative energies and wants to empower young women of color to take on more leadership roles.

PRODUCTION STAFF

Associate Director **Karl Michael Iglesias**
Associate Choreographer/Choreography for "Angelo, a goldsmith" **Brianna Mercado**
Associate Scenic Designer **Jessie Baldinger**
Associate Costume Designer **Karen Boyer**
Assistant Costume Designer **Lindsey Eifert**
Associate Music Director/Copyist **Simon Broucke**
Assistant Company Manager **Autumn Knight**
Production Assistant **Isabella Lombardo**
Tour Tech **Drew Anderson, Jay Savana, Joanie Tripodi-Kaminsky, Adina Valerio**
Tour Tech Sub **Hannah McGrath**
Van Driver **Evan Gomez**
AI **Farid Vargas**
A2 **Alejandro Suquisupa**
Sub AI/A2 **Melissa Valencia**
Audio Crew **G. Alan Busch Jr., Joseph Codella, Noah Phillips, Danny Roth**
Costume Coordinator **Jules DeSchryver**
Wardrobe Supervisor **Helisoa Randriamananana**
Draper **Marie Stair**
First-Hand **Audrey Palmeyer**
Prop Artist **Milo Robinson**
Assistant Technical Director **Carson Bishop**
Charge Artist **Hugh Morris-Stan**
Scenery Special Projects **Meb Griffin**
Scenery Construction & Load-In Crew **Kevin Abrans, Krystalee Diaz, Nick Fleming, Rory Schall**
Production Logistics Manager **Samuel Arencibia**
Logistics Technicians **Martin Rios, Robert Vesce**

PRODUCTION CREDIT

Sound Equipment provided by Masque Sound.

SPECIAL THANKS

Harkness Dance Center, Starbright Floral Design

 THE ACTORS AND STAGE MANAGERS EMPLOYED IN THIS PRODUCTION ARE MEMBERS OF ACTORS' EQUITY ASSOCIATION, THE UNION OF PROFESSIONAL ACTORS AND STAGE MANAGERS IN THE UNITED STATES.

 The Director and Choreographer are members of the STAGE DIRECTORS AND CHOREOGRAPHERS SOCIETY, a national theatrical labor union.

United Scenic Artists
Local USA 829, IATSE
The Representative Voice of Designers and
Scenic Artists for the Entertainment Industry  LOCAL 

THE COMEDY OF ERRORS/LA COMEDIA DE ERRORES



TROUBADOUR/TROVADORA

SYRACUSE



EGEON/EGEO

Egeon goes to Ephesus to look for his sons, but Syracusians aren't allowed there./Egeo va a Efeso a buscar a sus hijos, pero los Siracusanos no están permitidos allí!

SON & FATHER/
HIJO Y PADRE



ANTIPHOLUS OF SYRACUSE/
ANTÍFOLO DE SIRACUSA



DROMIO OF SYRACUSE/
DROMIO DE SIRACUSA

ANTIPHOLUS' SIDEKICK/
COMPAÑERO DE ANTÍFOLO

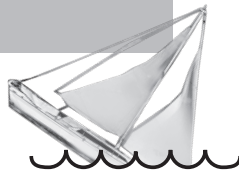
Antipholus and Dromio have been traveling the world to find their long lost twin brothers who were tragically separated. They land in Ephesus./Antífolo y Dromio viajan por el mundo en busca de sus hermanos gemelos perdidos. Desembarcan en Efeso.



UNDERSTUDY/SUPLENTE



UNDERSTUDY/SUPLENTE



THE SHIP OF EPIDAMNUM/
EL BARCO DE EPIDAMNUM



EPHESUS



MUSICIAN/MÚSICA



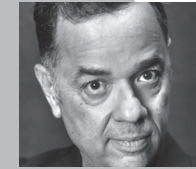
MUSICIAN/MÚSICO



EMILIA,
COURTESAN/CORTESANA



ANGELO



DR. PINCH

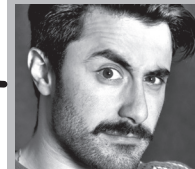
Dr. Pinch wants to heal people spiritually./El Dr. Pinch quiere curar a la gente espiritualmente.

The Courtesan wants her ring back from Antipholus of Ephesus./La Cortesana quiere que Antífolo de Efeso le devuelva su anillo.

Angelo wants money for her chain./Angelo quiere dinero para su cadena.



SOLINO



ANTIPHOLUS OF EPHESUS/
ANTÍFOLO DE EFESO

These two go way back./Ellos se conocen desde hace mucho.

They're having a confusing day./Están teniendo un día muy confuso.



DROMIO OF EPHESUS/
DROMIO DE EFESO

MARRIED/ESTÁN CASADOS



ADRIANA



LUCIANA

SISTERS/HERMANAS

SHE'S SINGLE/
ES SOLTERA

Photos by Nick Mito and Scott Jullies

MOBILE UNIT
PUBLIC

COMPANY

Antipholus of Syracuse/Ephesus **JOÉL ACOSTA**
Egeon/Pinch **VARÍN AYALA**
Solino/2nd Merchant **MICHAEL CASTILLEJOS**
Adriana **DANAYA ESPERANZA**
Luciana **KEREN LUGO**
Troubadour **SARA ORNELAS**
Dromio of Syracuse/Ephesus **GÍAN PÉREZ**
Courtesan/Emilia **DESIREÉ RODRIGUEZ**
Angelo **GLENDALIRIS TORRES-GREAUX**
Stage Manager **ARIANA MICHEL**
Fight Captain **ARIANA MICHEL**
Dance Captain **KEREN LUGO**

UNDERSTUDIES

Adriana, Luciana, Courtesan/Emilia, Angelo
REBECCA JIMENEZ
Antipholus, Egeon/Pinch, Solina/2nd Merchant,
Troubadour, Dromio **ALAN MENDEZ**

MUSICIANS

Music Directors **JACINTA CLUSELLAS,**
JULIÁN MESRI
Assistant Music Director **SIMON BROUCKE**
Guitar **MICHAEL CASTILLEJOS, JACINTA**
CLUSELLAS, SARA ORNELAS
Percussion **RAPHAEL TORN**
Sub Percussion **RENATO THOMS**



The Company of Mobile Unit's THE COMEDY OF ERRORS. Photo by Seth Dallas

PUBLIC THEATER STAFF

Artistic Director **Oskar Eustis**
 Executive Director **Patrick Willingham**
 Associate Artistic Director/Resident Director
Saheem Ali
 Associate Artistic Director/Director, Artistic
 Programs **Fredome Bradley-Ballentine**
 General Manager **Jeremy Adams**
 Chief Marketing Officer **Tom McCann**
 Chief Financial Officer **Murray Abeles**
 Director of Producing & Artistic Planning
Chiara Klein

Director of Production **Peter Dean**
 Directors of Casting **Jordan Thaler** and
Heidi Griffiths
 Associate Director, Public Theater Productions:
Leah Matthes
 Administrative Chief of Staff **Rosalind Barbour**
 Senior Director, Development **Kristina Hoge**
 Senior Director, Human Resources **Sarah Rosen**
 Director of New Work Development **Amrita Ramanan**
 Director, Anti-Racism, Equity and Belonging
Alexa Smith

For a full list of Public Theater Staff, visit: publictheater.org/about/public-theater-staff-list/



CORPORATE SUPPORTERS

ADOBE INC.
 A&O SHEARMAN
 BAIN & COMPANY
 BOSTON CONSULTING GROUP
 CHANEL
 DAVIS POLK & WARDWELL LLP

GOLDMAN SACHS
 KIRKLAND & ELLIS LLP
 SIMPSON THACHER &
 BARTLETT LLP
 WINSTON & STRAWN LLP



PUBLIC THEATER SUPPORTERS

For a full listing of our generous Public Theater supporters, visit: publictheater.org/about/donors

THE PUBLIC.



LEAD SUPPORTING PARTNER
**OPEN SOCIETY
 FOUNDATIONS**

THE LUESTHER T. MERTZ LEGACY TRUST
 PROVIDES LEADERSHIP SUPPORT FOR THE PUBLIC THEATER'S YEAR-ROUND ACTIVITIES



Generous support for Mobile Unit is provided by Gina Maria Leonetti, The McLaughlin Children's Trust, and Anonymous.

PUBLIC THEATER BOARD OF TRUSTEES

CHAIR

Luis A. Miranda, Jr.

CO-CHAIR

Pat Fili-Krushel

VICE CHAIR

Kenny Leon
Alisa Amarosa Wood

TREASURER

Mychal Harrison

SECRETARY

Gordon J. Davis, Esq.

ARTISTIC DIRECTOR

Oskar Eustis

EXECUTIVE DIRECTOR

Patrick Willingham

TRUSTEES

Kwame Anthony Appiah
Andrea E. Bernstein
Jason Blum
Michael Bosworth
Mary Schmidt Campbell
Kurt Chauviere
Lee Daniels
Gordon J. Davis, Esq.
Lisa E. Davis
Yrthya Dinzey-Flores
Susan Edelstein
Eric Ellenbogen
Oskar Eustis*
Hilary C. Feshbach
Pat Fili-Krushel
Faith E. Gay
Danai Gurira
Mychal Harrison

Anne Hathaway
Chris Hogbin
Maxine Isaacs
Ashley Leeds
Kenny Leon
Jayne Lipman
Luis A. Miranda, Jr.
Hans Morris
James Murdoch
Gail Merrifield Papp
Julia Pershan
Julio Peterson
Michael Price
Janice Cook Roberts
Wendi Rose
Alexandra Shiva
Jaymere Stein
Jim Steinberg
Steven C. Taub
Arielle Tepper
Teresa Tsai
Angela Vallot
Alex Volckhausen
Sam Waterston
Audrey Wilf
Frances Wilkinson
Patrick Willingham*
Anne Clarke Wolff
Alisa Amarosa Wood

STAFF

REPRESENTATIVES

Cristina Ayón-Viesca
Pablo Hernandez Basulto
Kaleda Davis

FOUNDER

Joseph Papp†

HONORARY COUNCIL

Laurie Beckelman
Colin Callender
Larry Condon
Morgan Freeman
Kevin Kline
Josh Sapan
Liev Schreiber
Warren J. Spector
Grace Lyu Volckhausen
George C. Wolfe

EX-OFFICIO

Honorable Eric Adams,
Mayor of the City of New York
Ken Sunshine, Mayor's Representative
Honorable Adrienne E. Adams,
Speaker of the New York City Council
Honorable Andrea Gordillo,
Speaker's Representative
Honorable Laurie A. Cumbo, Commissioner,
Department of Cultural Affairs*
Honorable Susan Donoghue,
Commissioner, New York City,
Department of Parks & Recreation

CHAIRPERSON EMERITI

H. Scott Higgins
Kenneth B. Lerer
Joseph B. Martinson†
LuEsther T. Mertz†
Robert Pittman
George C. Scott†
Warren J. Spector
Arielle Tepper

†Deceased *Voting ex-officio

GOVERNMENT SUPPORT

City of New York, Department
of Cultural Affairs
Eric Adams, Mayor of the City
of New York
Adrienne E. Adams, Speaker,
New York City Council
Carlina Rivera, Council Member

Gale A. Brewer, Council Member NYC
Council, Manhattan Delegation
Mark Levine, Manhattan
Borough President
Kathy Hochul, Governor
of the State of New York
New York State Council on the Arts

New York State Office of Parks,
Recreation & Historic Preservation
State Senator Brad Hoylman-Sigal
Daniel J. O'Donnell,
Assembly Member
National Endowment for the Arts

YOUNG PARTNER BOARD

Sherry Jun Chen
Jonathan Cohen
Arielle Goren
Andrew Klaber
Dominic Ramos-Ruiz

Michael Roberts
Sophie Ruddock
Harrison Silverstein
Michael Skolnik
Stephanie Turner

Sonal Uberoi
Forrest Wilkinson (Co-Chair)
Sascia Yuan (Co-Chair)

SUPPORT

THE PUBLIC

DOUBLE YOUR IMPACT!

Now through 6/30, all gifts supporting Mobile Unit and GO PUBLIC! will be matched up to \$25,000.

Help ensure the work of Mobile Unit and magic of Free Shakespeare in the Park lives on this summer—free, for all! Donate today for double the impact!

The Public is now on Venmo. Donate @publictheater to support Free Shakespeare for all!



TAKE OUR SURVEY & WIN!

FILL OUT THE SURVEY &
BE ENTERED TO WIN
A PAIR OF TICKETS
TO EACH SHOW
in The Public's Fall 2024 Season
+ A PAIR OF JETBLUE
FLIGHT VOUCHERS!



Here's to a twinning season.



Proud to partner with The Public
in bringing Shakespeare's
'The Comedy of Errors' to audiences
across NYC's 5 boroughs.

jetBlue®

